

Country fact sheet France



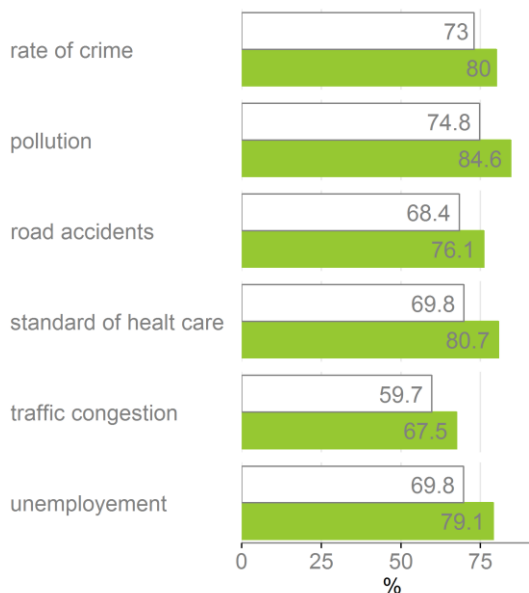
ESRA 2015 results

The ESRA project is a joint initiative of research institutes in 17 European countries aiming at collecting comparable national data on road users' opinions, attitudes and behaviour with respect to road traffic risks. A common questionnaire was developed in English (UK) and translated into 20 different country-language versions. The themes covered in the survey are: attitude towards unsafe traffic behaviour, behaviour of other road users, subjective safety and risk perception, involvement in road crashes, reported police checks and perceived likelihood of getting caught for traffic offences, self-declared (unsafe) behaviour in traffic, support for road safety policy measures and use of different modes of transportation.

Data collection took place simultaneously in all countries in June/July 2015. In total, ESRA gathered data from over 17,000 road users, including almost 11,000 frequent car drivers. An overview of the project and the results are available on www.esranet.eu. The following figures show a core set of variables in which France (green) is compared with the European ESRA mean (white).

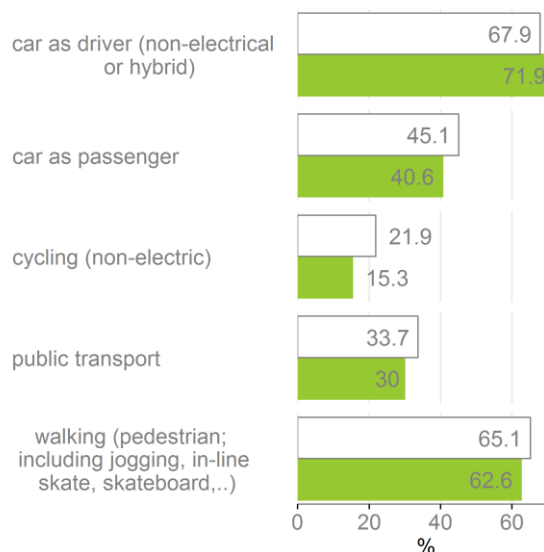
General RS

How concerned are you about each of the following issues? (4-point scale, 1=very concerned to 4=not at all concerned) - % of respondents feeling (very) concerned (1-2)



Mode of transportation

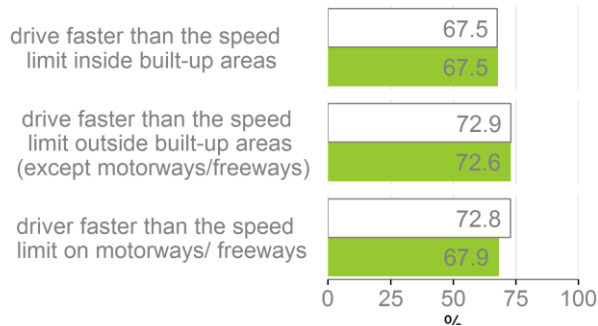
What were your most frequent modes of transport during the last 12 months? - % of respondents choosing this mode as one of their top 3 transportation mode



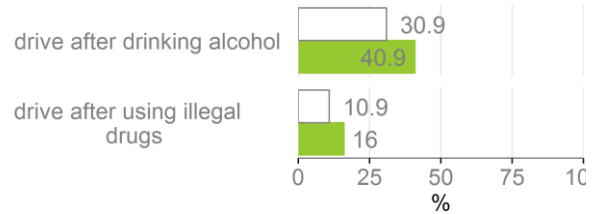
Self-reported behaviour

In the past 12 months, as a road user, how often did you...? (5-point scale, 1=never to 5=(almost) always) - % at least once (2-5)

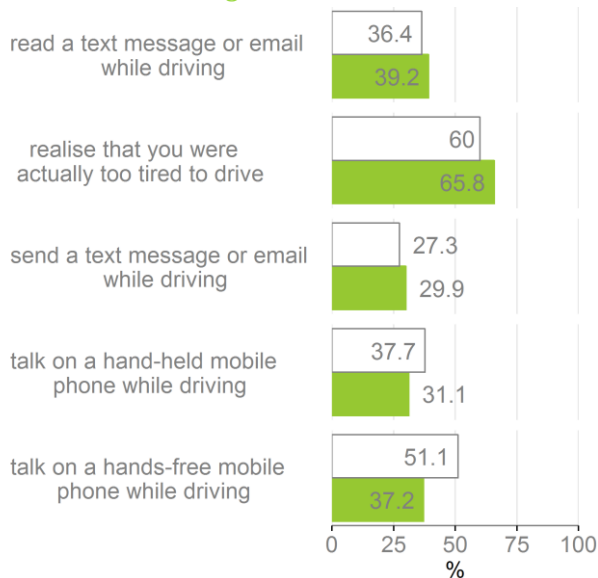
Speed



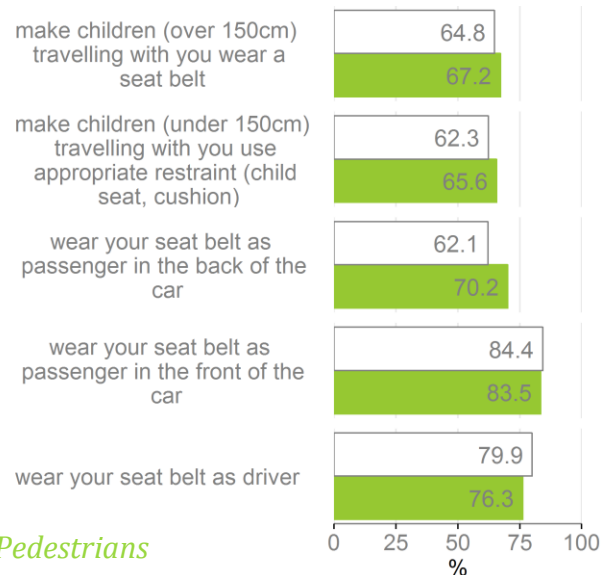
DUI



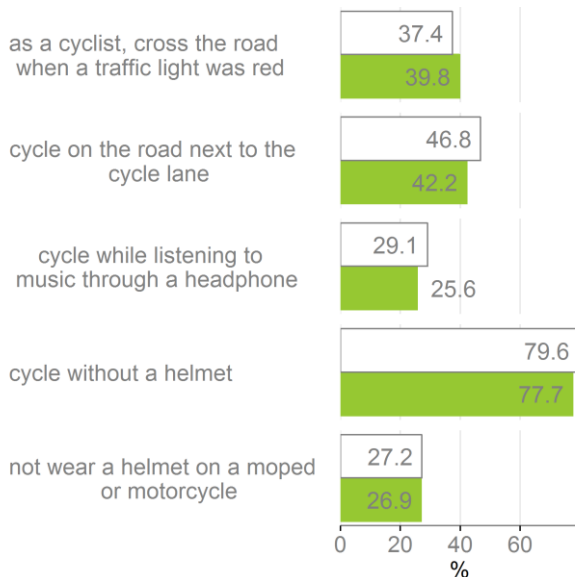
Distraction & Fatigue



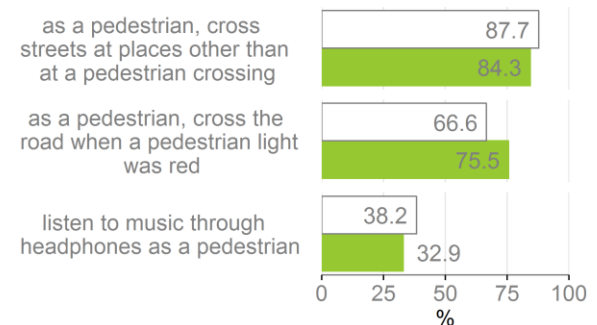
Seat belt and Child restraint systems¹- % almost always (5)



Cyclists & Motorcyclists



Pedestrians

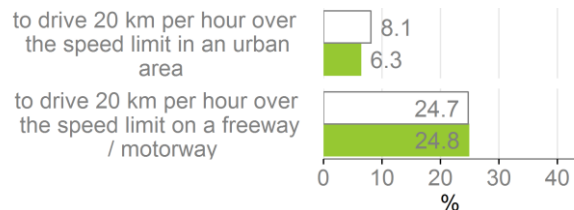


¹ The seatbelt related items describe safe behaviour – in contrast with the other items

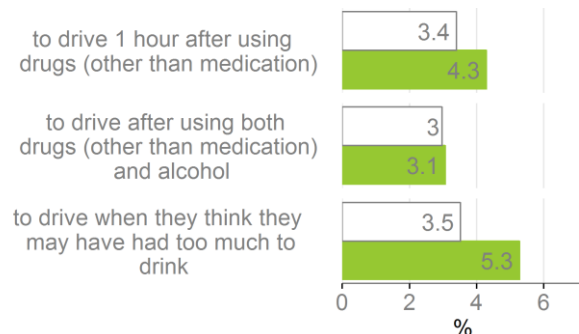
Acceptability – personal

How acceptable do you, personally, feel it is for a driver...? (5- point scale, 1=unacceptable to 5=acceptable) - % (rather) acceptable (4-5)

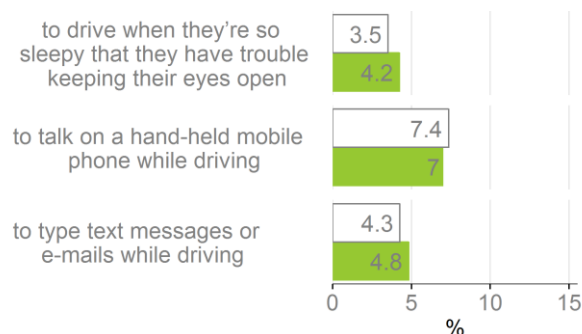
Speed



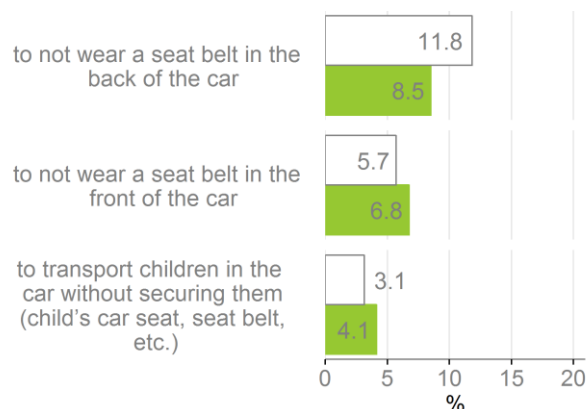
DUI



Distraction & Fatigue

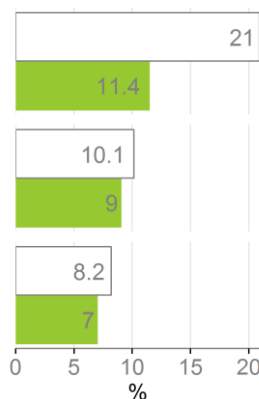
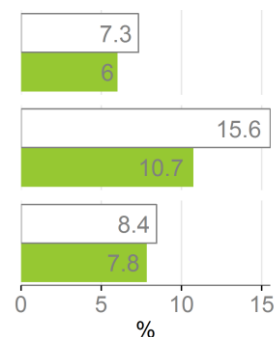
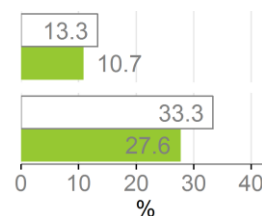


Seat belt and Child restraint systems



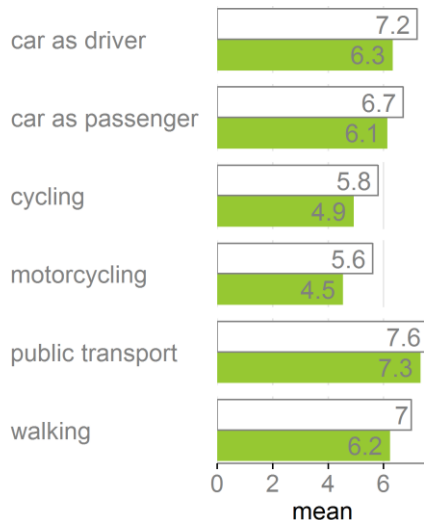
Acceptability- others

Where you live, how acceptable would most other people say it is for a driver...? (5-point scale, 1=unacceptable to 5=acceptable) - % (rather) acceptable (4-5)



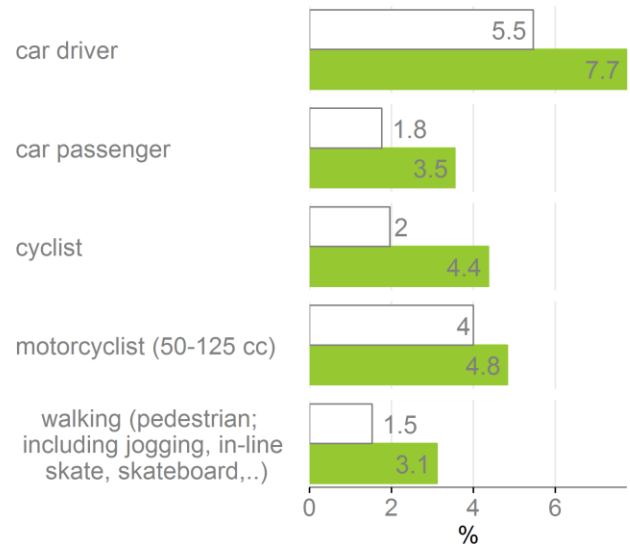
(Un)Safety feeling

How (un)safe do you feel when using the following transport modes...? (11-point scale, 0=very unsafe to 10 very safe) - mean of the 11-point scale



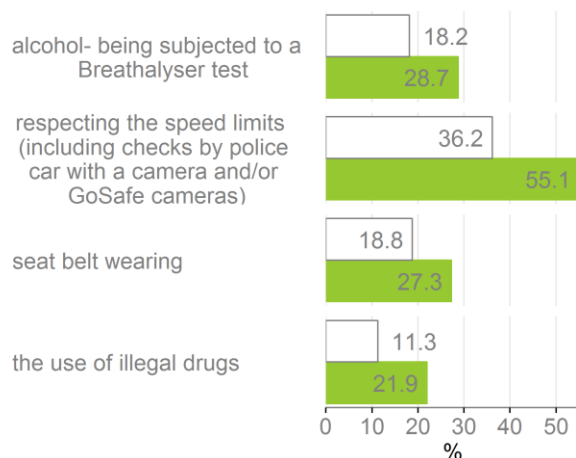
Involvement in road crashes

In the past three months have you been involved in a road traffic accident as...? - % at least once

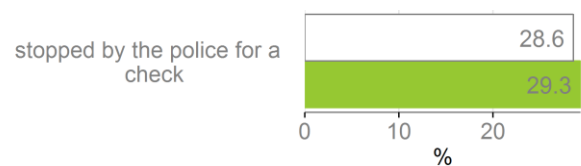


Enforcement

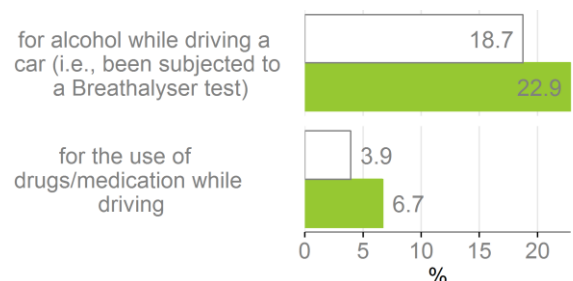
On a typical journey, how likely is it that you (as a driver) will be checked by the police for...? (5-point scale, 1=very small chance to 5 (almost) always) - % (very) big chance



In the past 12 months, how many times have you been stopped by the police for a check? - % at least once



In the past 12 months, how many times were you checked by the police...? - % at least once



Background Data

Basic data of France in relation to the European average².

(Source: Eurostat)

Exposure

	year	FR
total length of roads (km)*	2014	1073468
total length of motorways (km)*	2014	11560
vehicle kilometres (total in millions)*	2014	572400
motorisation rate (Cars/1 000 inhab.)**	2014	496

* Source: Mémento statistique des transports urbains et routiers 2014 (SOeS)

** Source: ONSIR and INSEE

Persons killed in road accidents by age (CARE database)

ages	year	FR		EU	
		absolute number	% of the age category	absolute number	% of the age category
0-14	2013	97	3.0	673	2.6
15-17	2013	102	3.1	622	2.4
18-24	2013	636	19.5	3813	14.7
25-49	2013	1213	37.1	9236	35.7
50-64	2013	532	16.3	5121	19.8
≥65	2013	688	21.1	6423	24.8
TOTAL	2013	3268	100.0	25888	100.0

European sum computed with the most recent available year by country (2009: BG, EE; 2010: MT, SK; 2012: IE; 2013: BE, DK, EL, ES, FI, FR, HU, IT, LT, NL, PL, PT, SE, SI; others: 2014)

Persons killed in road accidents by transport mode (CARE database)

Mode of transportation	year	FR	EU
		absolute number	absolute number
car (including taxi)	2014	1664	11768
moped	2014	165	737
motor cycle	2014	649	3776
pedal cycle	2014	159	2108
pedestrian	2014	499	5681

European sum computed with the most recent available year by country (2009: BG; 2010: MT; 2013: EL; IE; SI, SI; others: 2014)

Population

	year	FR	EU
population (M. inhab.)*	2013	63.7	500.9
density (inhab./km2)*	2013	117.1.	117.0

* Source: INSEE for France

Age Distribution

ages	year	FR	EU
0-14	2013	18.4	15.6
15-24	2013	11.9	11.5
25-49	2013	32.5	35.0
50-64	2013	19.4	19.7
65-79	2013	12.0	13.1
≥80	2013	5.7	5.1

% of the population

Individuals' level of internet skills³

level	year	FR	EU
low	2013	NA	30
medium	2013	NA	35
high	2013	NA	12

% of the total number of individuals aged 16 to 74

Low level: Individuals who have carried out 1 or 2 of the 6 internet-related items.

Medium level: Individuals who have carried out 3 or 4 of the 6 internet-related items.

High level: Individuals who have carried out 5 or 6 of the 6 internet-related items.

² The European average is based on the EU-27: Austria, Belgium, Bulgaria, Cyprus, Czech Republic, Denmark, Estonia, Finland, France, Germany, Greece, Hungary, Ireland, Italy, Latvia, Lithuania, Luxembourg, Malta, the Netherlands, Poland, Portugal, Romania, Slovak Republic, Slovenia, Spain, Sweden and the United Kingdom.

³ The six internet-related activities which were used to group the respondents were: (a) use of a search engine to find information; (b) send an e-mail with attached files; (c) post messages to chat rooms, newsgroups or any online discussion forum; (d) use the internet to make telephone calls; (e) use peer-to-peer file sharing for exchanging movies, music etc.; (f) create a web page.

Please refer to this document as: Belgian Road Safety Institute (2016). Country fact sheet France. ESRA project (European Survey of Road users' safety Attitudes). Brussels, Belgium: Belgian Road Safety Institute.

Report number: 2016 - F - 09 – EN (D/2016/0779/40)

